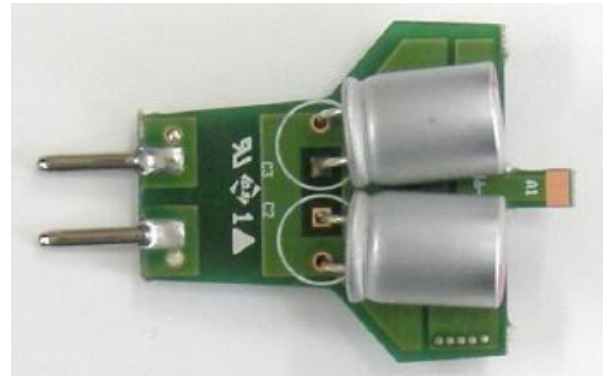


## MR 3W Switching Mode Power Supply

### ■ Special Features

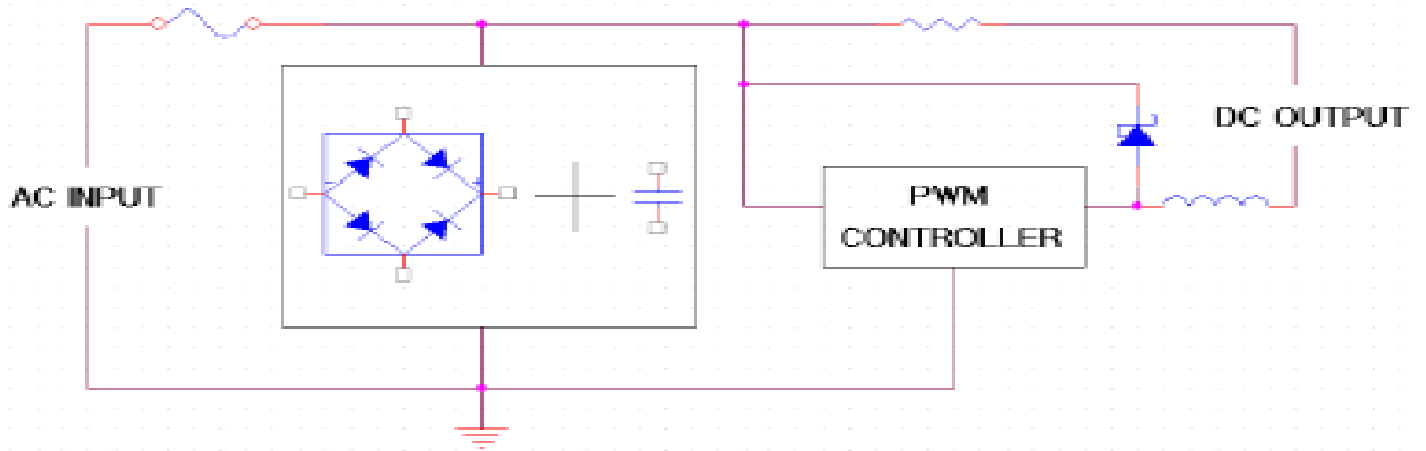
- Wide Input Range
- Isolated output
- Short circuit protection
- Over voltage protection
- Thermal shutdown



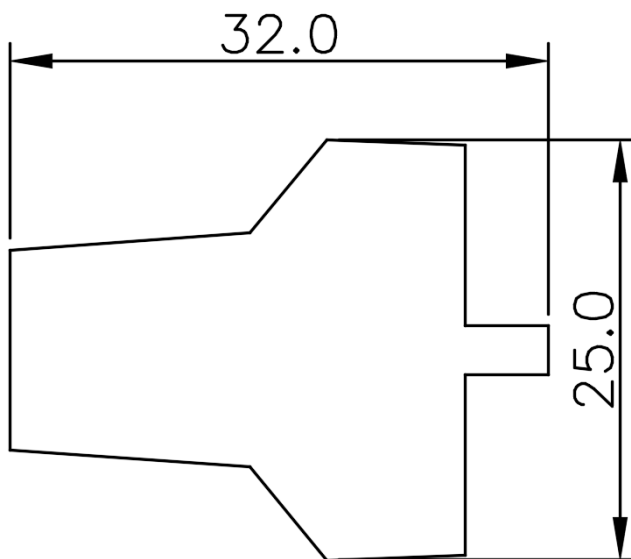
### ■ Electrical Characteristics

Characteristics		Condition	Min.	Typ.	Max.	Unit	
Input	Input Voltage Range	Vin=12Vac, ILED=360mA	11	12	24	Vac	
		Vin=12Vdc, ILED=360mA	10.5	12	34	Vdc	
	Input Power	Vin=12Vac, ILED=360mA	-	2.93	-	W	
		Vin=12Vdc, ILED=360mA	-	2.76	-		
	Input Current	Vin=12Vac, ILED=360mA	-	300	-	mA	
		Vin=12Vdc, ILED=360mA	-	230	-		
Output	Output Voltage	Vin=12Vac, ILED=360mA	5.6	5.9	6.2	V	
		Vin=12Vdc, ILED=360mA	5.6	5.9	6.2		
	Output Current	Vin=12Vac, Vout=5.9V	-	-	360	mA	
		Vin=12Vdc, Vout=5.9V	-	-	360		
	Efficiency	Vin=12Vac, ILED=360mA	-	73	-	%	
		Vin=12Vdc, ILED=360mA	-	76	-		
	Power Factor	Vin=12Vac, ILED=360mA	-	80	-	%	
		Vin=12Vdc, ILED=360mA	-	80	-		
	Output Current Ripple	Vin=12Vac, ILED=360mA	-	-	0.25	Vp-p	
		Vin=12Vdc, ILED=360mA	-	-	0.25		
	Ambient Temperature	Operating Range		-10	-	70	°C
		Storage Range		-20	-	105	°C

■ **Block Diagram**



■ **DIMENSION**



Notes

- 1. Dimension in mm

POWERGEN Co., Ltd.

67-13, Shinchon-dong, Changwon si, Gyeongnam, S.Korea, 642-370

TEL : + 82 55 275 7801~4

FAX + : 82 55 275 2522

Homepage : www.pwrg.co.kr

Online shop : www.pwrgmall.co.kr

This semiconductor technical data is believed to be accurate and reliable, however POWERGEN does not assume any responsibility arising out of the application or use of any product or circuit described herein; neither does it convey any license under its patent rights nor the rights of others.

POWERGEN reserves the right at anytime without notice to change said circuitry and specifications.